

# C of E Primary School

*Landscape*

*Nr Ashburton*

*Devon*

*TQ13 7LY*

*Tel: 01803 762656*

*Email: adminlandscape@thelink.academy*

Link  
Academy  
Trust  
*Stronger Together*



## NEWSLETTER MONDAY 11<sup>th</sup> MAY

Dear Parents,

As another week of home learning came to an end, I was yet again amazed by all the fantastic and imaginative learning that the children have been completing. We all recognise the pressures that you as parents must be under; trying to juggle working from home yourselves, with looking after and supporting the children with their learning, so I just want to express my thanks to you all for really rising to the challenge!

All the staff have been working hard either at home, or at Edu-care, to provide learning opportunities for the children and I know they all really enjoy seeing the work that the children are producing.

### HOME LEARNING

A few pictures to share



Landscape ensures...the keys to unlock the very best of us!



We are very grateful for the many positive comments we have received. As you can imagine, this has been an interesting journey for everyone. Please never underestimate the power of a message or e-mail - your positivity has been extremely welcome!

### VE Day

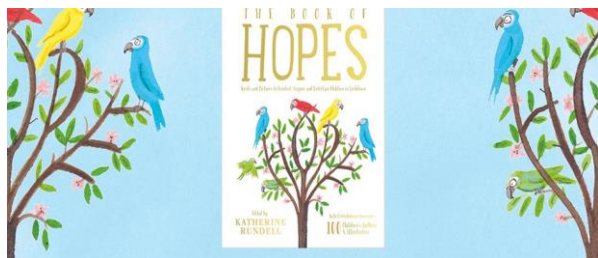
As you know, VE Day, marking the end of World War II in Europe, was on 8th May 1945. I've seen lots of examples of socially distanced 1940s-style afternoon tea parties on Facebook. If you celebrated in this way, do send some photos of your afternoon tea for our next newsletter.

Please take this opportunity to discuss the themes of service, duty and sacrifice with your children. Of course, this is particularly important this year as we think about the men and women who are performing their duty in our NHS or are key workers who are serving our community in other selfless ways.



### HEALTH & WELLBEING

Do you fancy getting away from it all for a few minutes? Why not set aside some time to read, experience, escape, go on an adventure and explore the Book of Hopes (Click on the link below) with your child/children. It contains beautiful words and pictures to comfort, inspire and entertain your children during the lockdown <https://literacytrust.org.uk/family-zone/9-12/book-hopes/>



Mrs Neville has asked me to share this collective worship at home link that Rev Tom shared with her. Please click the link below if you'd like to engage with this. <https://engageworship.org/engage-at-home-daily-family-prayer-and-worship-activities> They will include a simple prayer or worship activity which families can engage with together, using movement, interaction, craft, play and more.



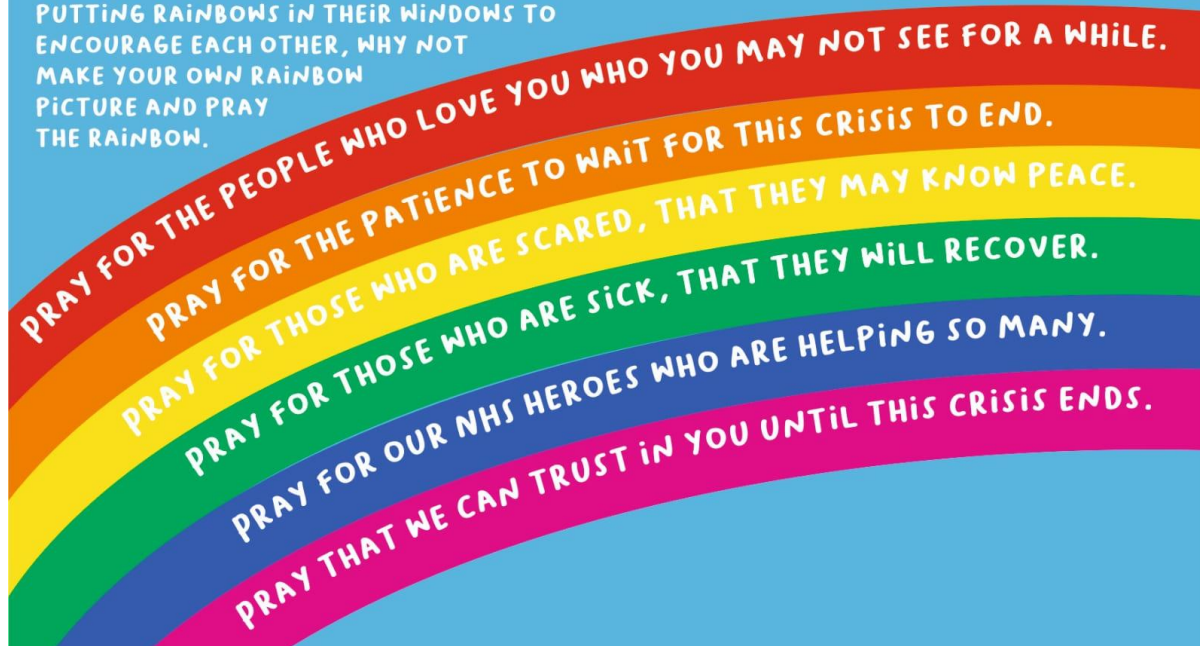
## REFLECTIVE SPACE

Mrs Neville has been hard at work at school creating a new reflective space in the hall. It would be lovely if you could encourage children to send in their own rainbow prayers.



# PRAY THE RAINBOW

RAINBOWS ARE A SIGN OF GODS PROMISE TO LOOK AFTER US. PEOPLE AROUND THE COUNTRY ARE PUTTING RAINBOWS IN THEIR WINDOWS TO ENCOURAGE EACH OTHER, WHY NOT MAKE YOUR OWN RAINBOW PICTURE AND PRAY THE RAINBOW.



We are keeping a close eye on the latest Government advice and as soon as we know more about requirements on how schools should run when reopening for set year groups and the logistics of this, we will of course let you know. I will be meeting with senior leaders from across the Trust tomorrow and we will begin to create a plan following advice from DfE and Devon County. In the meantime, we will continue to support and provide home learning opportunities and interaction for the children through e-schools and email as well as running the Hub School here at Landscope. Have a good fortnight everyone.

Stay safe and keep smiling.

*Jill Ryder.*